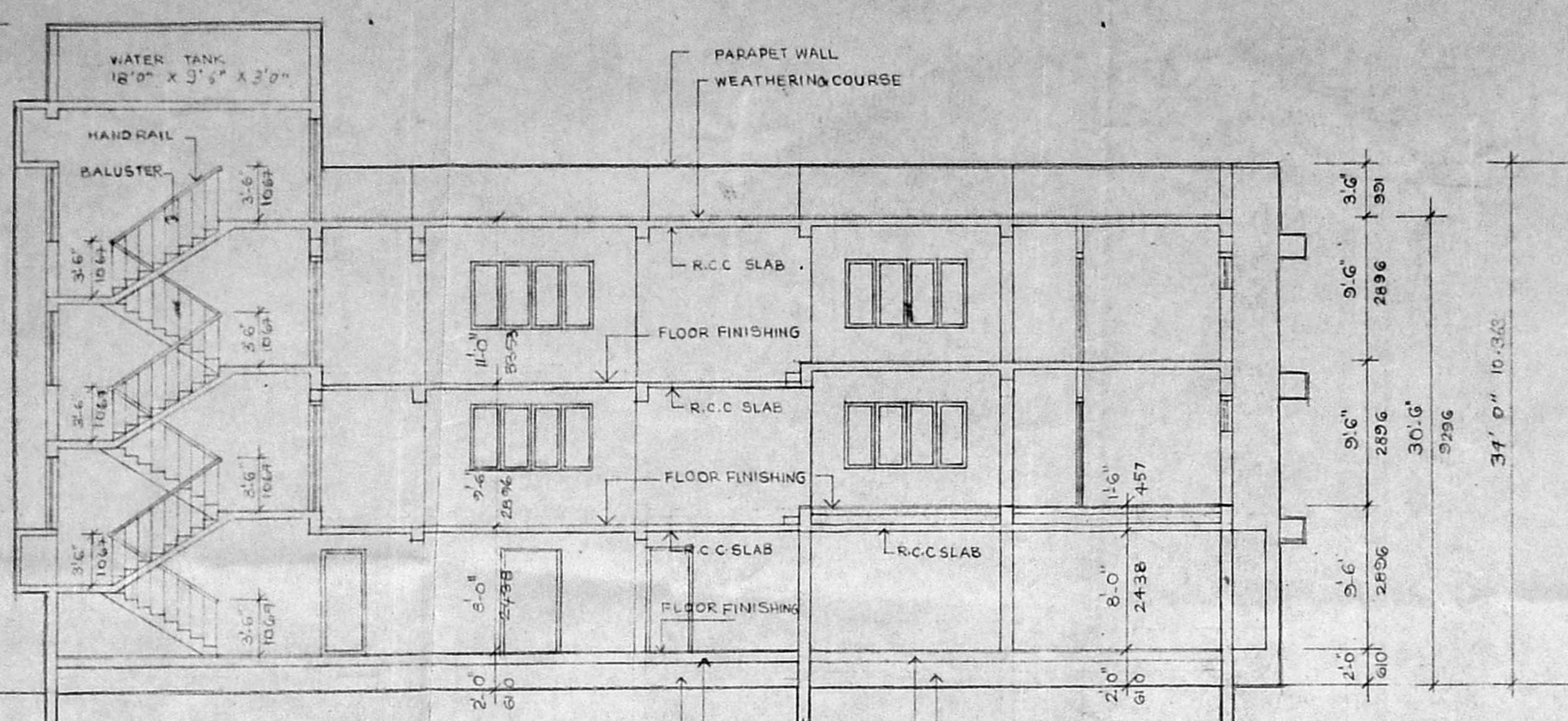
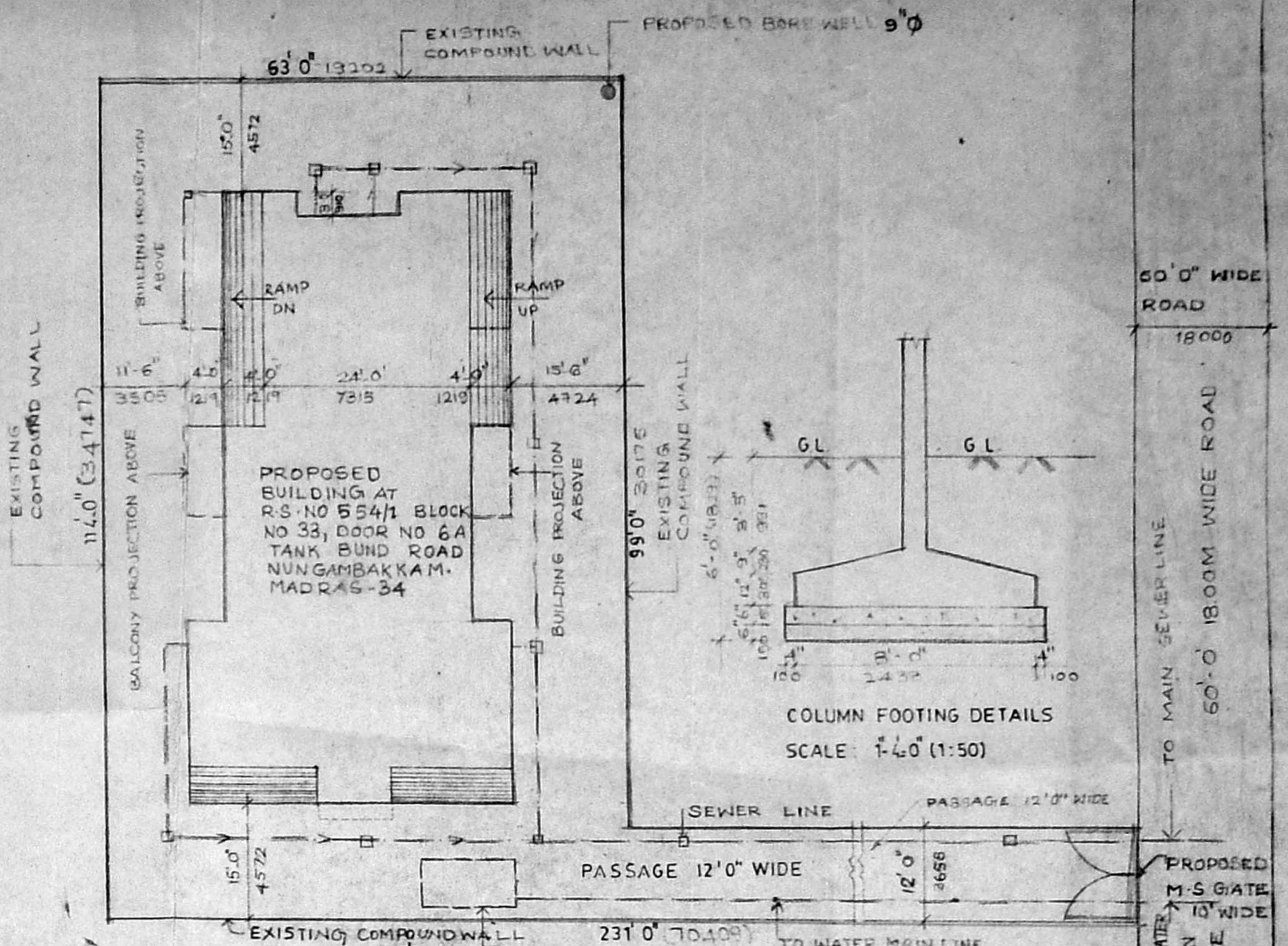


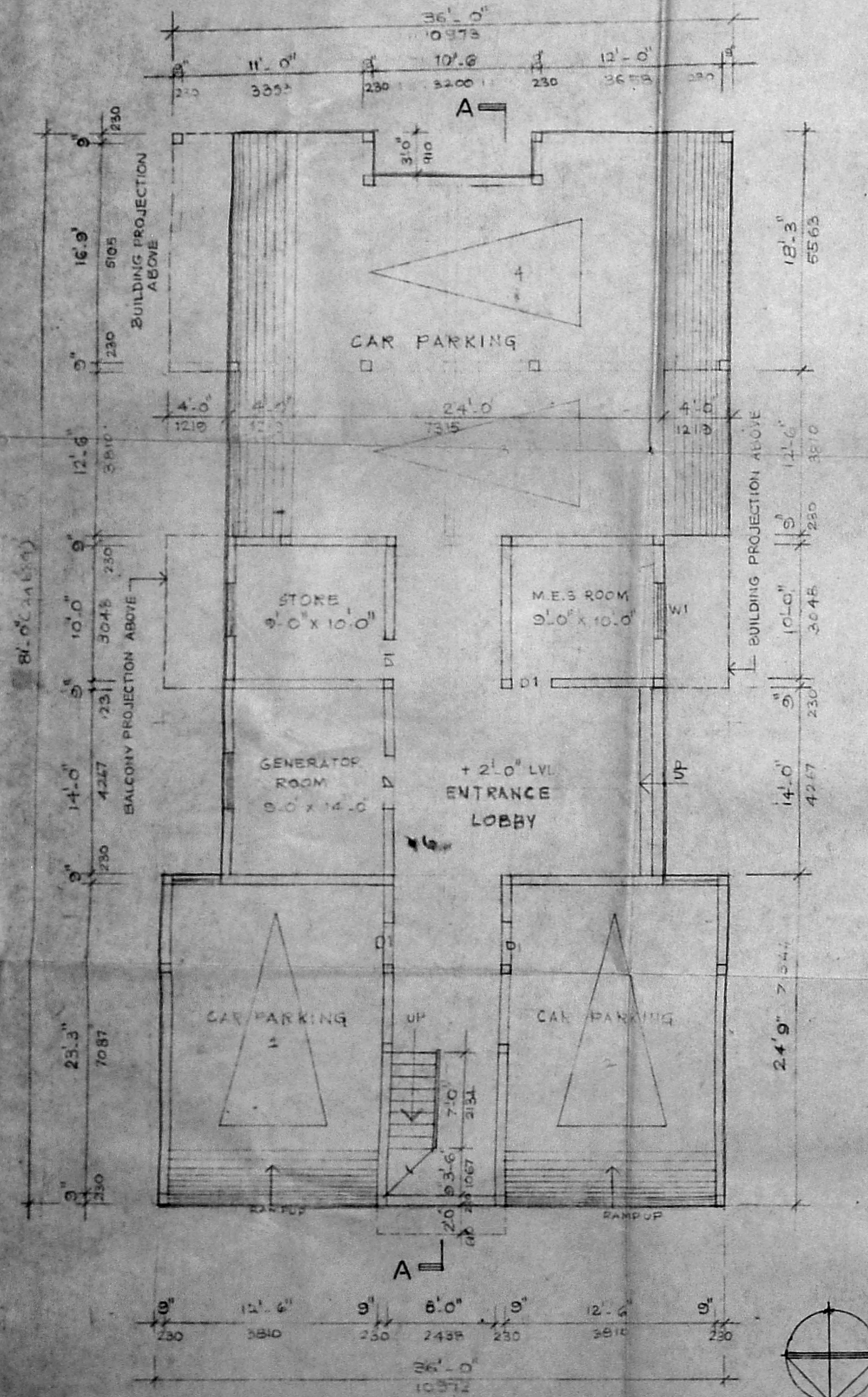
ELEVATION  
SCALE: 1/8" (1:100)



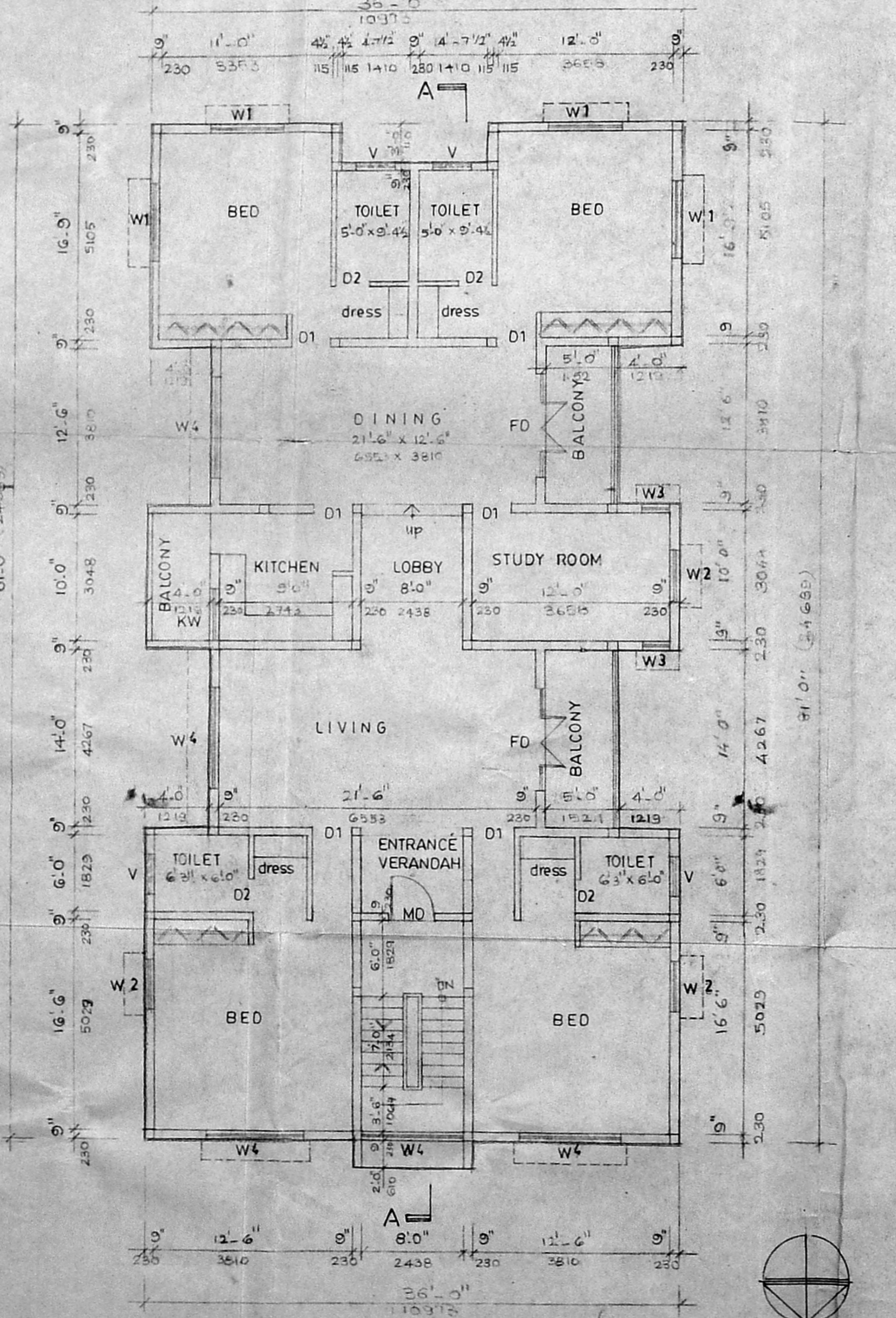
SECTION ON AA  
SCALE: 1/8" (1:100)



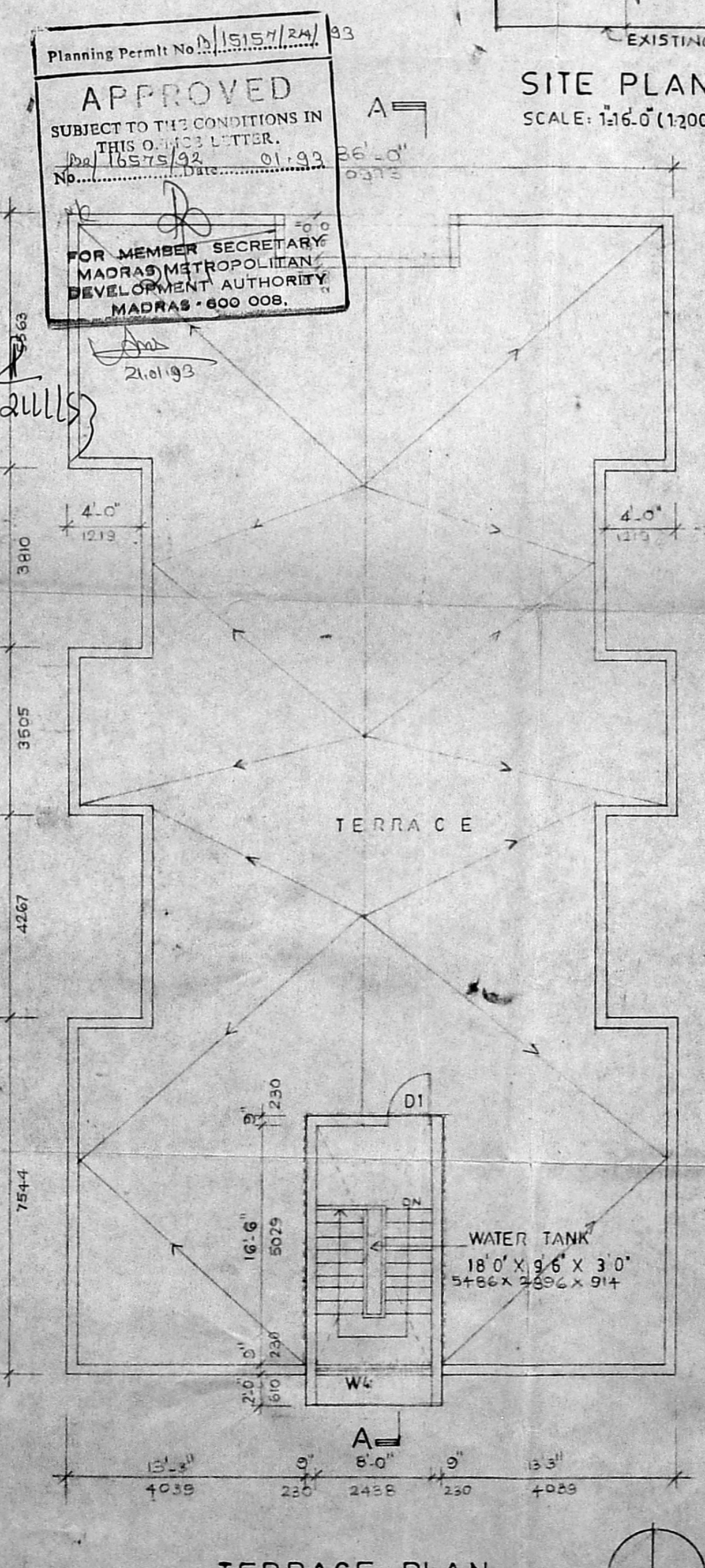
SITE PLAN  
SCALE: 1/16" (1:200)



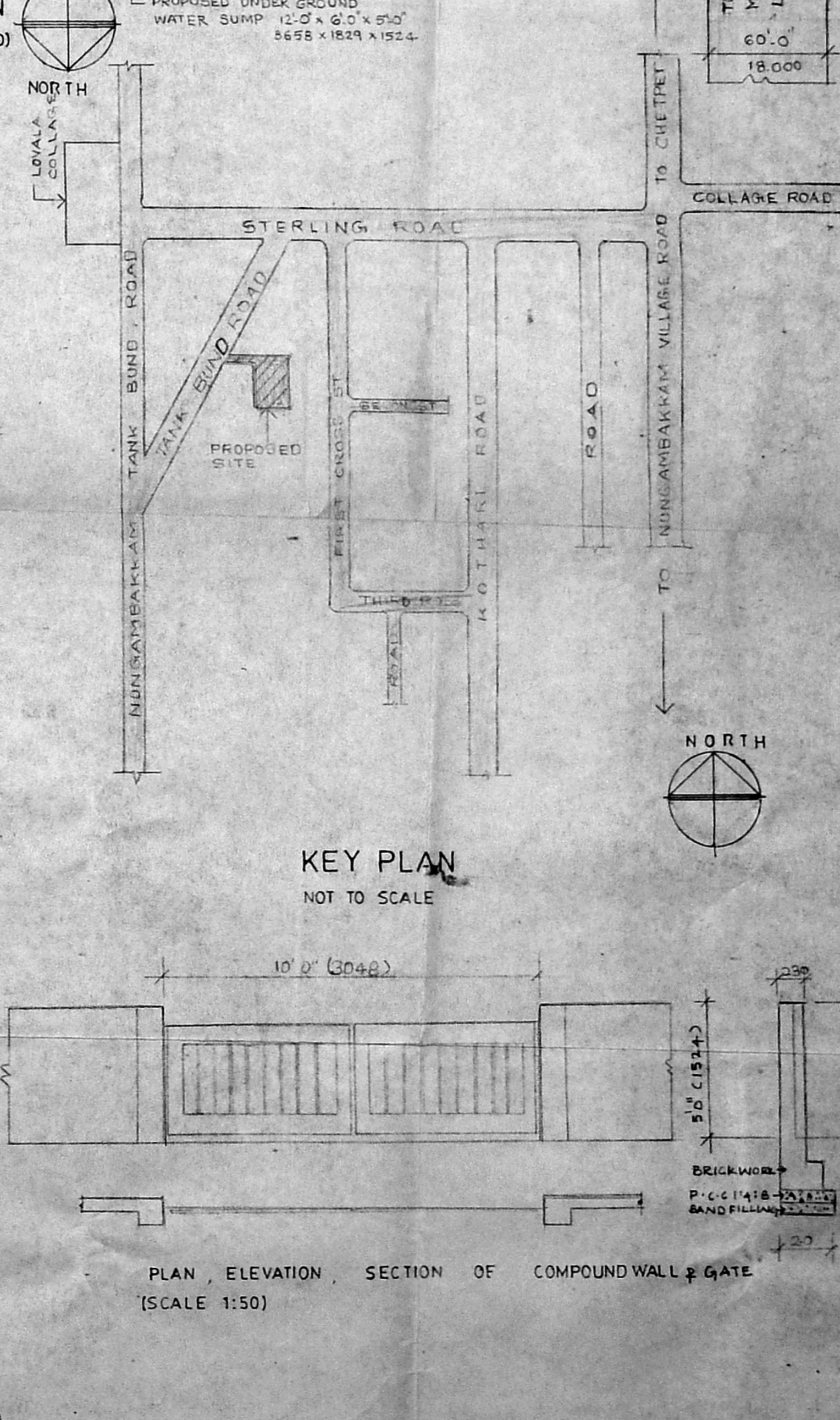
GROUND FLOOR PLAN  
SCALE: 1/8" (1:100)



TYPICAL FLOOR PLAN (FIRST FLOOR & SECOND FLOOR PLAN)  
SCALE: 1/8" (1:100)



TERRACE PLAN  
SCALE: 1/8" (1:100)



KEY PLAN  
NOT TO SCALE

Planning Permit No. 15157/RA/83  
**APPROVED**  
SUBJECT TO THE CONDITIONS IN THIS OFFICE LETTER.  
No. 15157/92 Date: 01.09.93  
FOR MEMBER SECRETARY  
MADRAS METROPOLITAN  
DEVELOPMENT AUTHORITY  
MADRAS - 600 008.

SCHEDULE OF JOINERY			
TYPE	WIDTH	HEIGHT	DESCRIPTION
MD	3'-0" (914)	7'-0" (2134)	MAIN DOOR
D	4'-0" (1219)	7'-0" (2134)	WOODEN DOOR
D1	3'-0" (914)	7'-0" (2134)	WOODEN DOOR
D2	2'-0" (610)	7'-0" (2134)	WOODEN DOOR
W1	4'-0" (1219)	4'-6" (1372)	WOODEN GLAZED WINDOW
W2	4'-0" (1219)	4'-6" (1372)	WOODEN GLAZED WINDOW
W3	2'-0" (610)	4'-6" (1372)	WOODEN GLAZED WINDOW
W4	2'-0" (610)	4'-6" (1372)	WOODEN GLAZED WINDOW
W5	2'-0" (610)	4'-6" (1372)	WOODEN GLAZED WINDOW
W6	2'-0" (610)	4'-6" (1372)	WOODEN GLAZED WINDOW
W7	2'-0" (610)	4'-6" (1372)	WOODEN GLAZED WINDOW
W8	2'-0" (610)	4'-6" (1372)	WOODEN GLAZED WINDOW
W9	2'-0" (610)	4'-6" (1372)	WOODEN GLAZED WINDOW
W10	2'-0" (610)	4'-6" (1372)	WOODEN GLAZED WINDOW
W11	2'-0" (610)	4'-6" (1372)	WOODEN GLAZED WINDOW
W12	2'-0" (610)	4'-6" (1372)	WOODEN GLAZED WINDOW
W13	2'-0" (610)	4'-6" (1372)	WOODEN GLAZED WINDOW
W14	2'-0" (610)	4'-6" (1372)	WOODEN GLAZED WINDOW
W15	2'-0" (610)	4'-6" (1372)	WOODEN GLAZED WINDOW
W16	2'-0" (610)	4'-6" (1372)	WOODEN GLAZED WINDOW
W17	2'-0" (610)	4'-6" (1372)	WOODEN GLAZED WINDOW
W18	2'-0" (610)	4'-6" (1372)	WOODEN GLAZED WINDOW
W19	2'-0" (610)	4'-6" (1372)	WOODEN GLAZED WINDOW
W20	2'-0" (610)	4'-6" (1372)	WOODEN GLAZED WINDOW
W21	2'-0" (610)	4'-6" (1372)	WOODEN GLAZED WINDOW
W22	2'-0" (610)	4'-6" (1372)	WOODEN GLAZED WINDOW
W23	2'-0" (610)	4'-6" (1372)	WOODEN GLAZED WINDOW
W24	2'-0" (610)	4'-6" (1372)	WOODEN GLAZED WINDOW
W25	2'-0" (610)	4'-6" (1372)	WOODEN GLAZED WINDOW
W26	2'-0" (610)	4'-6" (1372)	WOODEN GLAZED WINDOW
W27	2'-0" (610)	4'-6" (1372)	WOODEN GLAZED WINDOW
W28	2'-0" (610)	4'-6" (1372)	WOODEN GLAZED WINDOW
W29	2'-0" (610)	4'-6" (1372)	WOODEN GLAZED WINDOW
W30	2'-0" (610)	4'-6" (1372)	WOODEN GLAZED WINDOW
W31	2'-0" (610)	4'-6" (1372)	WOODEN GLAZED WINDOW
W32	2'-0" (610)	4'-6" (1372)	WOODEN GLAZED WINDOW
W33	2'-0" (610)	4'-6" (1372)	WOODEN GLAZED WINDOW
W34	2'-0" (610)	4'-6" (1372)	WOODEN GLAZED WINDOW
W35	2'-0" (610)	4'-6" (1372)	WOODEN GLAZED WINDOW
W36	2'-0" (610)	4'-6" (1372)	WOODEN GLAZED WINDOW
W37	2'-0" (610)	4'-6" (1372)	WOODEN GLAZED WINDOW
W38	2'-0" (610)	4'-6" (1372)	WOODEN GLAZED WINDOW
W39	2'-0" (610)	4'-6" (1372)	WOODEN GLAZED WINDOW
W40	2'-0" (610)	4'-6" (1372)	WOODEN GLAZED WINDOW
W41	2'-0" (610)	4'-6" (1372)	WOODEN GLAZED WINDOW
W42	2'-0" (610)	4'-6" (1372)	WOODEN GLAZED WINDOW
W43	2'-0" (610)	4'-6" (1372)	WOODEN GLAZED WINDOW
W44	2'-0" (610)	4'-6" (1372)	WOODEN GLAZED WINDOW
W45	2'-0" (610)	4'-6" (1372)	WOODEN GLAZED WINDOW
W46	2'-0" (610)	4'-6" (1372)	WOODEN GLAZED WINDOW
W47	2'-0" (610)	4'-6" (1372)	WOODEN GLAZED WINDOW
W48	2'-0" (610)	4'-6" (1372)	WOODEN GLAZED WINDOW
W49	2'-0" (610)	4'-6" (1372)	WOODEN GLAZED WINDOW
W50	2'-0" (610)	4'-6" (1372)	WOODEN GLAZED WINDOW
W51	2'-0" (610)	4'-6" (1372)	WOODEN GLAZED WINDOW
W52	2'-0" (610)	4'-6" (1372)	WOODEN GLAZED WINDOW
W53	2'-0" (610)	4'-6" (1372)	WOODEN GLAZED WINDOW
W54	2'-0" (610)	4'-6" (1372)	WOODEN GLAZED WINDOW
W55	2'-0" (610)	4'-6" (1372)	WOODEN GLAZED WINDOW
W56	2'-0" (610)	4'-6" (1372)	WOODEN GLAZED WINDOW
W57	2'-0" (610)	4'-6" (1372)	WOODEN GLAZED WINDOW
W58	2'-0" (610)	4'-6" (1372)	WOODEN GLAZED WINDOW
W59	2'-0" (610)	4'-6" (1372)	WOODEN GLAZED WINDOW
W60	2'-0" (610)	4'-6" (1372)	WOODEN GLAZED WINDOW
W61	2'-0" (610)	4'-6" (1372)	WOODEN GLAZED WINDOW
W62	2'-0" (610)	4'-6" (1372)	WOODEN GLAZED WINDOW
W63	2'-0" (610)	4'-6" (1372)	WOODEN GLAZED WINDOW
W64	2'-0" (610)	4'-6" (1372)	WOODEN GLAZED WINDOW
W65	2'-0" (610)	4'-6" (1372)	WOODEN GLAZED WINDOW
W66	2'-0" (610)	4'-6" (1372)	WOODEN GLAZED WINDOW
W67	2'-0" (610)	4'-6" (1372)	WOODEN GLAZED WINDOW
W68	2'-0" (610)	4'-6" (1372)	WOODEN GLAZED WINDOW
W69	2'-0" (610)	4'-6" (1372)	WOODEN GLAZED WINDOW
W70	2'-0" (610)	4'-6" (1372)	WOODEN GLAZED WINDOW
W71	2'-0" (610)	4'-6" (1372)	WOODEN GLAZED WINDOW
W72	2'-0" (610)	4'-6" (1372)	WOODEN GLAZED WINDOW
W73	2'-0" (610)	4'-6" (1372)	WOODEN GLAZED WINDOW
W74	2'-0" (610)	4'-6" (1372)	WOODEN GLAZED WINDOW
W75	2'-0" (610)	4'-6" (1372)	WOODEN GLAZED WINDOW
W76	2'-0" (610)	4'-6" (1372)	WOODEN GLAZED WINDOW
W77	2'-0" (610)	4'-6" (1372)	WOODEN GLAZED WINDOW
W78	2'-0" (610)	4'-6" (1372)	WOODEN GLAZED WINDOW
W79	2'-0" (610)	4'-6" (1372)	WOODEN GLAZED WINDOW
W80	2'-0" (610)	4'-6" (1372)	WOODEN GLAZED WINDOW
W81	2'-0" (610)	4'-6" (1372)	WOODEN GLAZED WINDOW
W82	2'-0" (610)	4'-6" (1372)	WOODEN GLAZED WINDOW
W83	2'-0" (610)	4'-6" (1372)	WOODEN GLAZED WINDOW
W84	2'-0" (610)	4'-6" (1372)	WOODEN GLAZED WINDOW
W85	2'-0" (610)	4'-6" (1372)	WOODEN GLAZED WINDOW
W86	2'-0" (610)	4'-6" (1372)	WOODEN GLAZED WINDOW
W87	2'-0" (610)	4'-6" (1372)	WOODEN GLAZED WINDOW
W88	2'-0" (610)	4'-6" (1372)	WOODEN GLAZED WINDOW
W89	2'-0" (610)	4'-6" (1372)	WOODEN GLAZED WINDOW
W90	2'-0" (610)	4'-6" (1372)	WOODEN GLAZED WINDOW
W91	2'-0" (610)	4'-6" (1372)	WOODEN GLAZED WINDOW
W92	2'-0" (610)	4'-6" (1372)	WOODEN GLAZED WINDOW
W93	2'-0" (610)	4'-6" (1372)	WOODEN GLAZED WINDOW
W94	2'-0" (610)	4'-6" (1372)	WOODEN GLAZED WINDOW
W95	2'-0" (610)	4'-6" (1372)	WOODEN GLAZED WINDOW
W96	2'-0" (610)	4'-6" (1372)	WOODEN GLAZED WINDOW
W97	2'-0" (610)	4'-6" (1372)	WOODEN GLAZED WINDOW
W98	2'-0" (610)	4'-6" (1372)	WOODEN GLAZED WINDOW
W99	2'-0" (610)	4'-6" (1372)	WOODEN GLAZED WINDOW
W100	2'-0" (610)	4'-6" (1372)	WOODEN GLAZED WINDOW

**SPECIFICATIONS**

FOUNDATION : COLUMN FOOTING FOUNDATION OVER A LAYER OF R.C.C. AND SAND FILLING

SUPER STRUCTURE : BRICK WORK IN C.M. 1:2 PLASTER WITH C.M. 1:4

FLOORING : CEMENT FLOORING

R.C.C. WORK : R.C.C. SLAB, BEAMS, LINTELS AND SUN SHADES

WEATHERING : TILES ARE Laid IN SLOPE OVER A DRY BRICK TELLER LINE CONCRETE WITH CRUDE OIL

NOTE : WELL TO BE HERMETICALLY SEALED SUMP AND O.H.T. TO BE SCIENTIFICALLY CLOSED

COLOUR CODE REFERENCE	
	PROPOSED WORK
	EXISTING ROAD
	BOUNDARY LINE
	SEWER LINE
	WATER LINE

G. SELVARAJAN, Archt. I.O., AIA  
REGISTERED ARCHITECT No. 218  
Corporation of Madras  
1, Sarangapani Street  
MADRAS-600 017.

SIGNATURE OF ARCHITECT



SIGNATURE OF OWNER

PROPOSED RESIDENTIAL BUILDING AT RS NO. 554/1  
BLOCK NO. 33, DOOR NO. 6A TANK BUND ROAD  
MUNGAMBAKKAM, MADRAS - 34.

REVISED DRAWING

FLOOR PLANS, ELEVATION SECTION, COMPOUND WALL, SITE PLAN, KEY PLAN, ETC.

SCALE: VARIOUS DATE: DRAWN: M.B.

ARCHITECTS:  
**SELVARAJAN & ASSOCIATES**  
1, SARANGAPANI ST., NAGAR, MADRAS - 17.